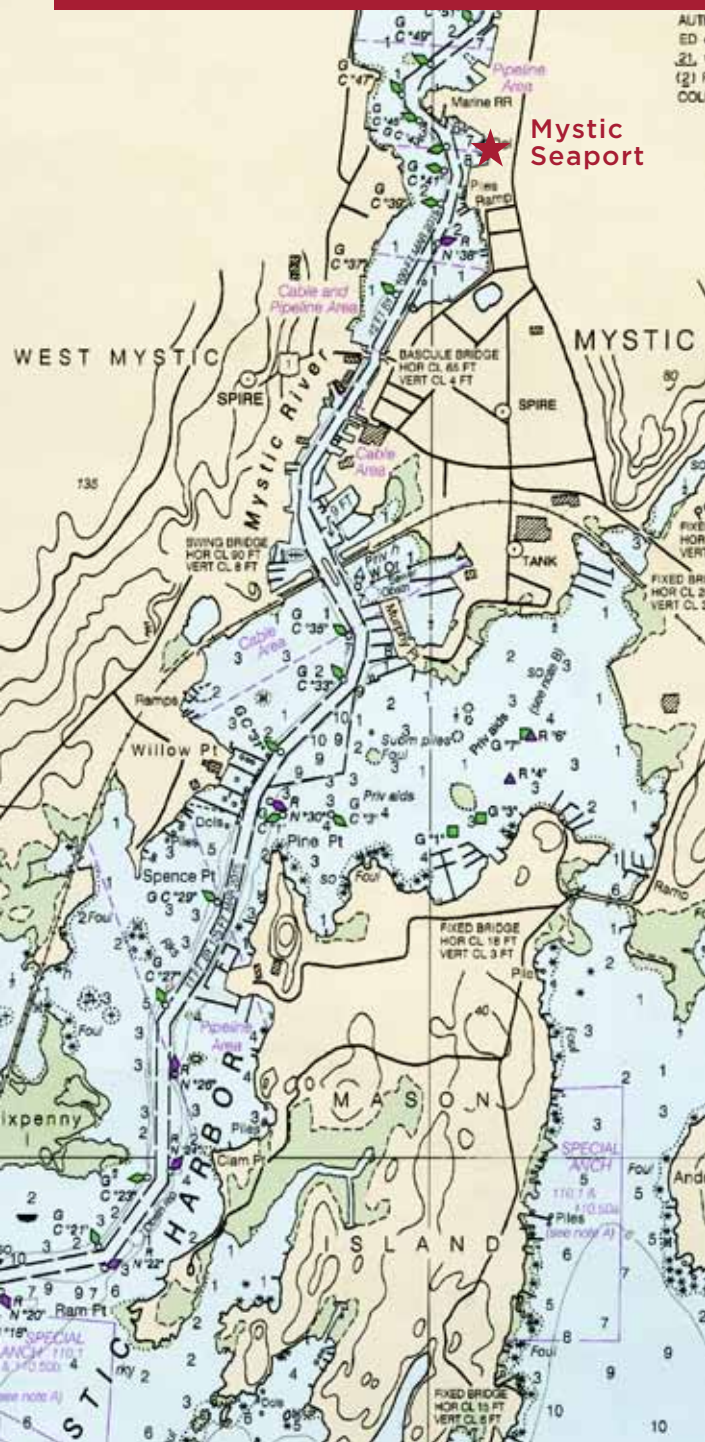


# 2018 Boater's Guide to Mystic Seaport



# Welcome Boaters!

## To Get Here

Our position is  $41^{\circ} 21.57' N \times 71^{\circ} 57.92' W$ . Use U.S. chart #13214 and pay strict attention to the buoys. The channel was dredged in 2015. You will pass through both the Mystic River Rail Bridge and the Mystic River Highway Bridge on your approach to Mystic Seaport. Both bridges require a call on VHF Ch. 13 to open. The Mystic River Rail Bridge will open on call unless a train is expected. The Mystic River Highway Bridge will open at 20 minutes before each hour from 7:40 a.m. until 6:40 p.m. and will open on call outside of those hours. The Highway Bridge will only open if you are in the channel and ready to pass through. The bridge will not open if you are waiting next to a dock.

## Radio Contact with Mystic Seaport

Please call the Dock Office on Ch. 71 when your vessel clears the highway bridge to receive your docking information.

## Arrival and Departure

Arrive any time between the 12:40 p.m. and 4:40 p.m. Mystic River Highway Bridge openings. Please depart no later than the 11:40 a.m. bridge opening. Alternate arrangements may be made in advance with the Dock Office.

## Dock Office

The Dock Office is located on the Village Green near the Visitor Center. Dock attendants are on duty from 9 a.m. to 5 p.m., May through October.



# Reservations

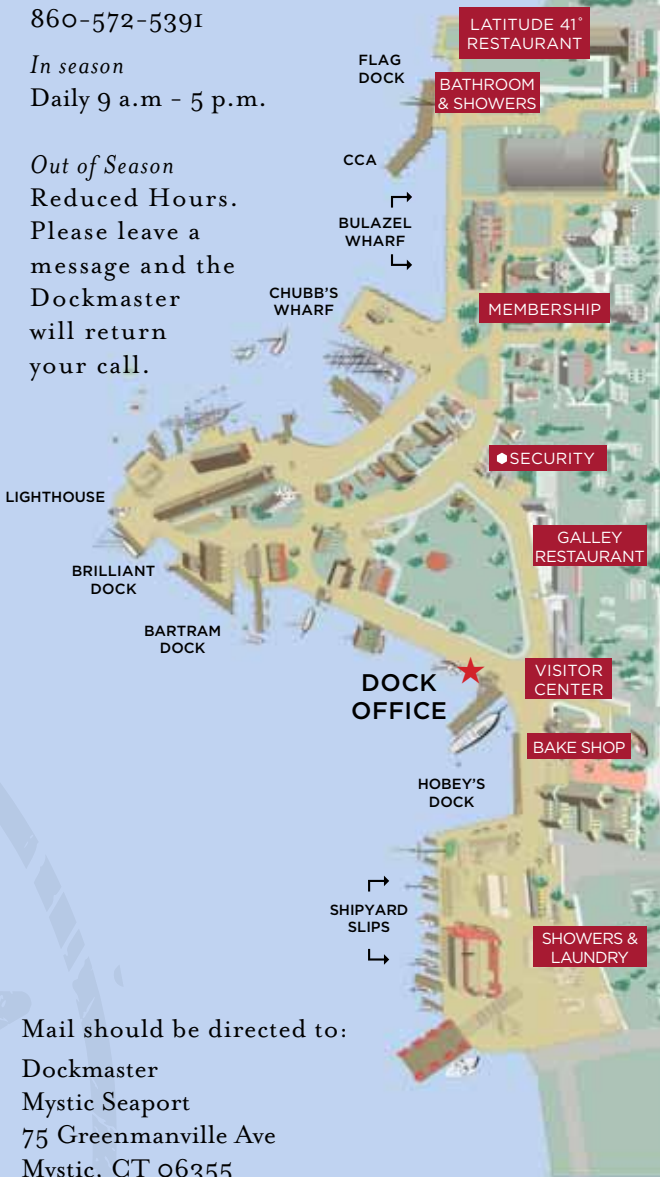
The easiest way to make a reservation is online at [Dockwa.com](http://Dockwa.com). For special requests or more information please feel free to contact us directly.

Email:  
[Docks@mysticseaport.org](mailto:Docks@mysticseaport.org)

Phone:  
860-572-5391

*In season*  
Daily 9 a.m - 5 p.m.

*Out of Season*  
Reduced Hours.  
Please leave a message and the Dockmaster will return your call.



Mail should be directed to:  
Dockmaster  
Mystic Seaport  
75 Greenmanville Ave  
Mystic, CT 06355

# 2018 Dockage Rates

## Dockage Rate Per Night

### Mariner Members

#### 2 **\$3.25 per foot (LOA)**

*(Includes Museum admission for members' guests arriving aboard)*

### Skippers & Seafarers Member Categories:

#### **\$3.25 per foot (LOA)**

*(Includes Museum admission for members' guests arriving aboard and a \$50 discount on second consecutive night, once per season.)*

### Voyager & Commodore Member Categories

#### **\$3.25 per foot (LOA)**

*(Includes Museum admission for members' guests arriving aboard and second consecutive night's dockage free, once per season)*

### Individual, Dual, Family-Grandparent Members and Non-Members: **\$4.50 per foot (LOA)**

*(Includes Museum admission for those aboard)*

Dock fees are computed on the basis of overall dock space required.

Be sure to ask our Dock staff about the Frequent Boater Reward program!

## Safe Harbor Marinas Collaboration

In collaboration with Safe Harbor Marinas, we are pleased to offer discounts to holders of the SHM Black Card. Cardholders will receive a \$.50 discount per foot on Mystic Seaport rates valid two nights per season. Safe Harbor Marinas has set the highest standards in the industry for amenities and service and invites boaters to visit the many SHM locations in the Northeast and in other parts of the United States. Visit [www.shmarinas.com](http://www.shmarinas.com) or [www.byy.com](http://www.byy.com) to find the ideal slip, storage, and service facility. Contact the Dock Office for more information.

Reservations cannot be confirmed without a deposit of one night's dockage. Credit card deposits can be taken by phone. Written reservation requests should be accompanied by a check. Deposits are refundable upon 7-day notice of cancellation, less a \$25 service fee. No refund for cancellations within 7 days.

Unless a late arrival is prearranged, reservations are held until the 4:40 p.m. bridge opening. *Revisions in dates are on a space-available basis.*

*Dock space will be assigned at time of arrival. We are unable to take reservations for specific locations on our waterfront.*

Please register with the Dock Office upon arrival.

If you cannot keep a reservation, please contact us by phone as soon as possible so that we may accommodate your fellow boaters.

We look forward to your visit and we will be happy to do whatever possible to make your stay more enjoyable. Stop in at the Dock Office with greetings, problems or questions and we will be happy to help.

## Become a Member and Save!

### **Fly Our Burgee**

Become a Mariner Member of Mystic Seaport to receive discounts on dockage and other great benefits.



Mariner Members and above are granted free dockage for day trips to the Museum. Please contact the Dock Office in advance to determine availability. Members and their guests are required to check in at the Visitor Center upon arrival.

For more information, stop by the Membership Building or call 860-572-5339.

# While You Are Here

## For Your Convenience

Heads and showers are located at the north end.

- 4 A similar facility, with laundry machines, is available at the south end of the property in the Shipyard area. (Please do not hang laundry on your boat while at Mystic Seaport.)

**The Mystic River is a no discharge zone. Use shoreside toilet facilities or holding tank aboard.** Free service is available by calling the Mystic River Pump Out boat on Ch. 68. There is also a pump out station in the Shipyard. Contact the dock office for more information.

The wharves are equipped with fresh water service and 30 amp AC electric outlet boxes at convenient locations. A limited number of 50 amp outlets and 100 amp single phase outlets are available. Overnight dockage includes complimentary water, wifi and power.

If you wish to buy ice, contact a dock attendant or the Dock Office.

**Recycling: cans and bottles must be separated from trash and placed in labeled barrels throughout docking areas.**

Telephone numbers for such services as taxi, engine repairs and general local information are available at the Dock Office.

## Emergency

In case of an emergency, contact the Museum's Security Office, which is staffed around the clock, at 860-572-5310.

**Fires of any kind** including solid fuel grills (charcoal, etc.) are forbidden. Cooking is permitted on board boats only on *approved marine stoves or bottled gas grills*.

Neither smoking nor alcoholic beverages are permitted on the Museum's docks or grounds. Smoking, including e-cigarettes, and alcohol consumption must be confined to your vessel.

*Boarding Museum vessels is not permitted before or after hours.*

Pets must be leashed when on the grounds. Please pick up after your pets.

Personal automobiles and motor bikes are not permitted on the grounds. Bicycle and scooters are not permitted to be stored on the grounds or docks, and must be walked, not ridden, if you are leaving our grounds.

Shoes and shirt must be worn at all times when on the grounds.

Consideration for others in dress and conduct is expected and we must request "all quiet" after 10 p.m.

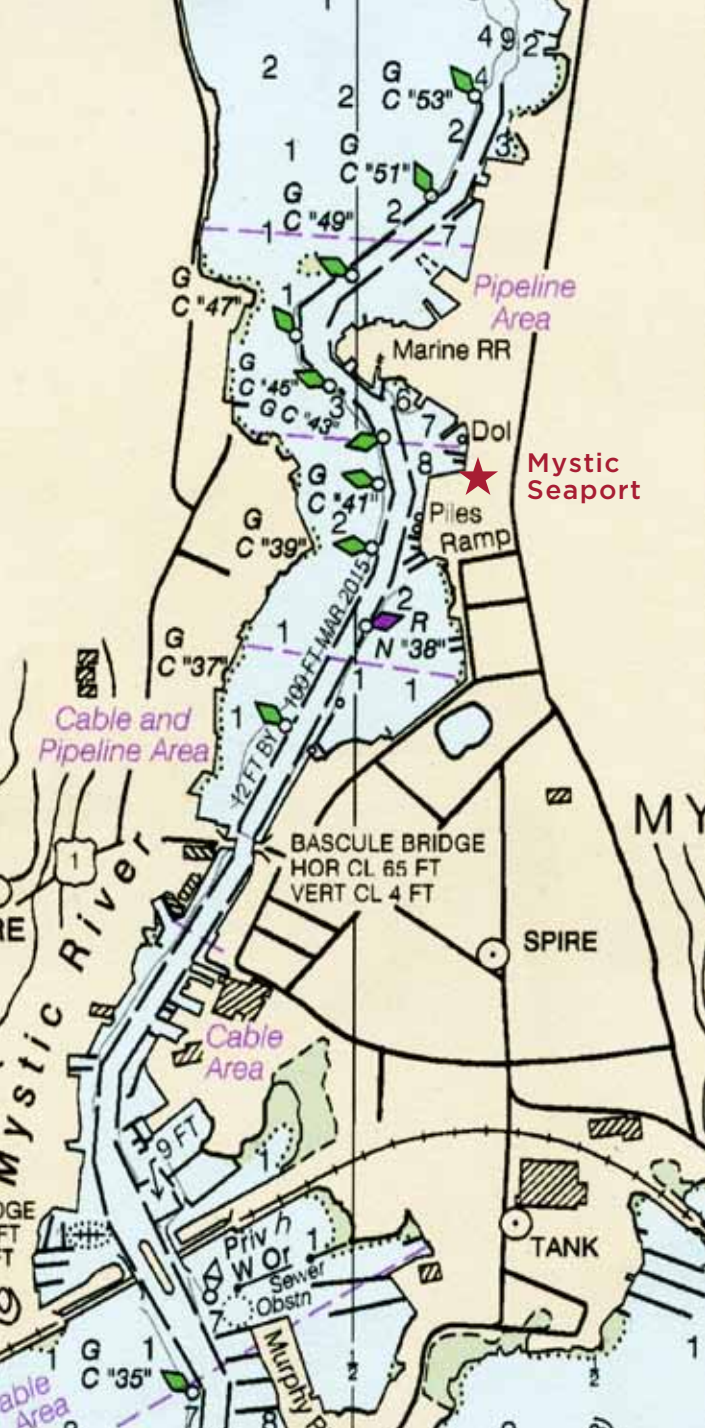
Swimming and fishing are not permitted.

Night lights on wharves and grounds are necessary for the protection of persons and property.

Use of power tools is prohibited while dock side.

Mystic Seaport's first priority must be for the protection of its own irreplaceable historic watercraft. Therefore we regret that space which is normally used by visiting vessels, may have to be cleared if a hurricane or other violent storm appears imminent. The Dockmaster and his staff will warn visitors as soon as it becomes evident that they must leave. *Mystic Seaport reserves the right to cancel any and all dock reservations for the duration of the storm emergency period.* Should this situation arise, your cooperation and understanding will be greatly appreciated.





**MYSTIC SEAPORT** THE MUSEUM OF AMERICA AND THE SEA

860.572.0711 [www.mysticseaport.org](http://www.mysticseaport.org)

Charts copied from NOAA chart #13214, 2016